

ELENCO PARTI / Parts list

Elemento <i>Element</i>	Qtà <i>Quantity</i>	Descrizione <i>Description</i>	Materiali <i>Materials</i>
1	1	Otturatore <i>Disc</i>	AISI 316 L
2	1	Guarnizione <i>Gasket</i>	SILICONE, Viton e EPDM
3	2	Testata <i>External body</i>	AISI 316 L*
4	4	Vite TCEI <i>TCEI screw</i>	INOX A2
5	1	Tappo <i>Silicone end cap</i>	SILICONE
6	4	Tappo <i>Silicone end cap</i>	SILICONE
7	1	Rivestimento maniglia <i>Handle coating</i>	PVC BLU
8	1	Maniglia <i>Handle</i>	AISI 304
9	1	Bussola maniglia <i>Handle bearing</i>	AISI 304
10	1	Vite M5 x 30 <i>Skrew M5x30</i>	INOX A2
11	1	Dado M5 <i>Nut M5</i>	INOX A2
12	1	Molla <i>Spring</i>	INOX
13	1	Spina <i>Pin</i>	INOX A2

CONNESSIONI CONNECTIONS

Clamp BS 4825
 Attacco filettato F/F
Thread DIN connection
 Attacco a saldare DIN
Weld DIN connection
 Attacco maschio girella DIN
DIN round nut connection
 Attacco filettato GAS.F
UNI 338 Thread connection
 Attacco flangiato PN 6 / 16
PN6 / 16 flanged connection

MANIGLIE HANDLES

Maniglia stampata
Stamped handle
 Maniglia a 2 posizioni
Handle in 2 positions
 Maniglia pesante 2/8 posizioni
Handle rugged design 2/8 positions
 Regolazione continua con blocco
Stepless rotary handle with stop screw

FINITURE SURFACE FINISH

Esterno lucido a specchio
Outside mirror polished
 Interno satinato
Satin inside
 Altre finiture a richiesta
Other options upon request

Pressione nominale PN16
Nominal pressure PN16

Valvola a farfalla manuale
Manual butterfly valve

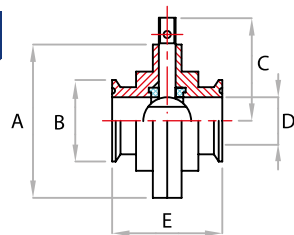


Valvola a farfalla ad asse nudo

Butterfly valves with free shaft

COD. VFTC...4/6-T*

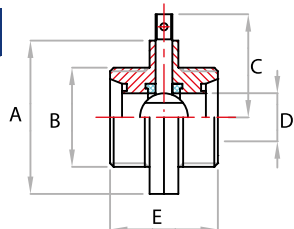
Attacco Clamp BS4825
Clamp Connection
BS4825



DN	1"	1"1/2	2"	2"1/2	3"	4"	6"	8"
A	80	86	104	112	125	155	229	265
B	50	50	64	77.4	91	118.8	166.7	217.7
C	63	67	77	78	87	101	174	198
D	22	34.8	47.5	60.2	72	97.6	146.8	197.8
E	65	70	70	70	70	80	100	125

COD. VFD...FF4/6-T*

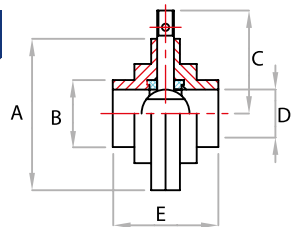
Attacco Filettato
DIN 11851 F/F
Thread Connection
DIN 11851 F/F



DN	25	32	40	50	60	65	80	100	125	150
A	80	86	92	104	112	125	137	155	190	229
B	52	58	65	78	85	95	110	130	160	190
C	63	67	67	77	78	86	95	101	160	180
D	26	32	38	50	60	66,5	80	100	125	150
E	65	70	70	70	70	70	80	85	122	122

COD. VFD...SS4/6-T*

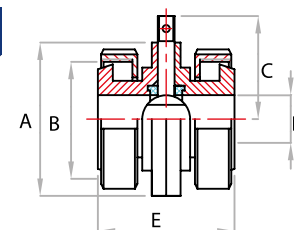
Attacco a saldare DIN
DIN Weld Connection



DN	25	32	40	50	65	80	100	125	150
A	80	86	92	104	125	137	155	190	229
B	28	34	40	52	70	85	104	129	154
C	63	67	67	77	86	95	101	160	180
D	25	31	37	59	66,5	80	100	125	150
E	65	65	70	70	70	80	85	70	74

COD. VFD...MG4/6-T*

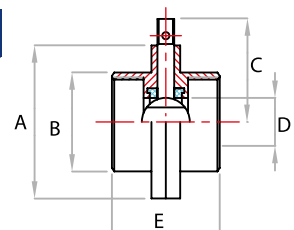
Attacco Maschio Gr. DIN
Round Nut Connection



DN	25	32	40	50	60	65	80	100	125	150
A	80	86	92	104	112	125	137	155	190	229
B	52	58	65	78	85	95	110	130	160	190
C	63	67	67	77	78	86	95	101	160	180
D	26	32	38	50	60	66,5	80	100	125	150
E	80	80	80	86	86	90	100	100	140	150

COD. VFG...FF4/6-T*

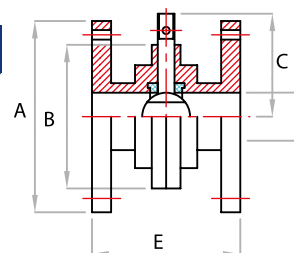
Attacco Filettato GAS.F
UNI 338 Thread
Connection



DN	1"	1"1/4	1"1/2	2"	2"1/2	3"	4"
A	80	86	92	104	125	137	155
B	52	58	65	78	95	110	125
C	63	67	67	77	86	95	101
D	26	32	38	50	66,5	80	100
E	65	70	70	70	70	80	90

COD. VFD...FL4/6-T*

Attacco Flangiato PN 6
Flanged Connection PN6



DN	25	32	40	50	65	80	100	125	150
A	100	120	130	140	160	190	210	240	265
B	80	86	92	104	125	137	155	190	229
C	63	67	67	77	88	95	101	160	180
D	26	21	38	50	66,5	80	100	125	150
E	84	84	90	100	100	110	120	140	140

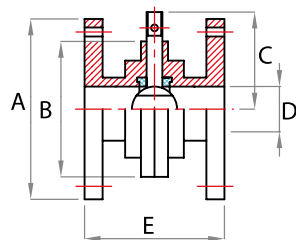
(T* = tenuta guarnizione)



DN	15	20	25	32	40	50	65	80	100
A	95	105	115	140	150	165	185	200	220
B	80	80	86	92	92	104	125	137	155
C	63	63	67	67	67	77	86	95	101
D	21.3	26.9	33.7	42.4	48.3	60.3	76.1	88.9	114.3
E	83	87	87	96	96	100	100	114	118

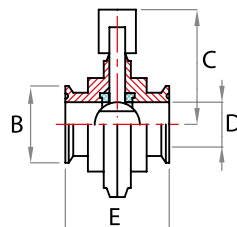
∅	1"	1 1/2"	2"
B	50.2	50.2	64
C	95	95	103
D	22	34.8	47.5
E	65	70	70

Esecuzioni speciali a richiesta
Special execution available on request



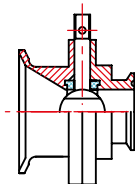
COD. VFD...FL4/6-T*

Attacco flangiato PN16
Flanged connction PN16



COD. VFTC...CC-6

Smontaggio rapido
 BS4825
*Dismantled quickly
 BS4825*



COD. VFFON-TC...-6

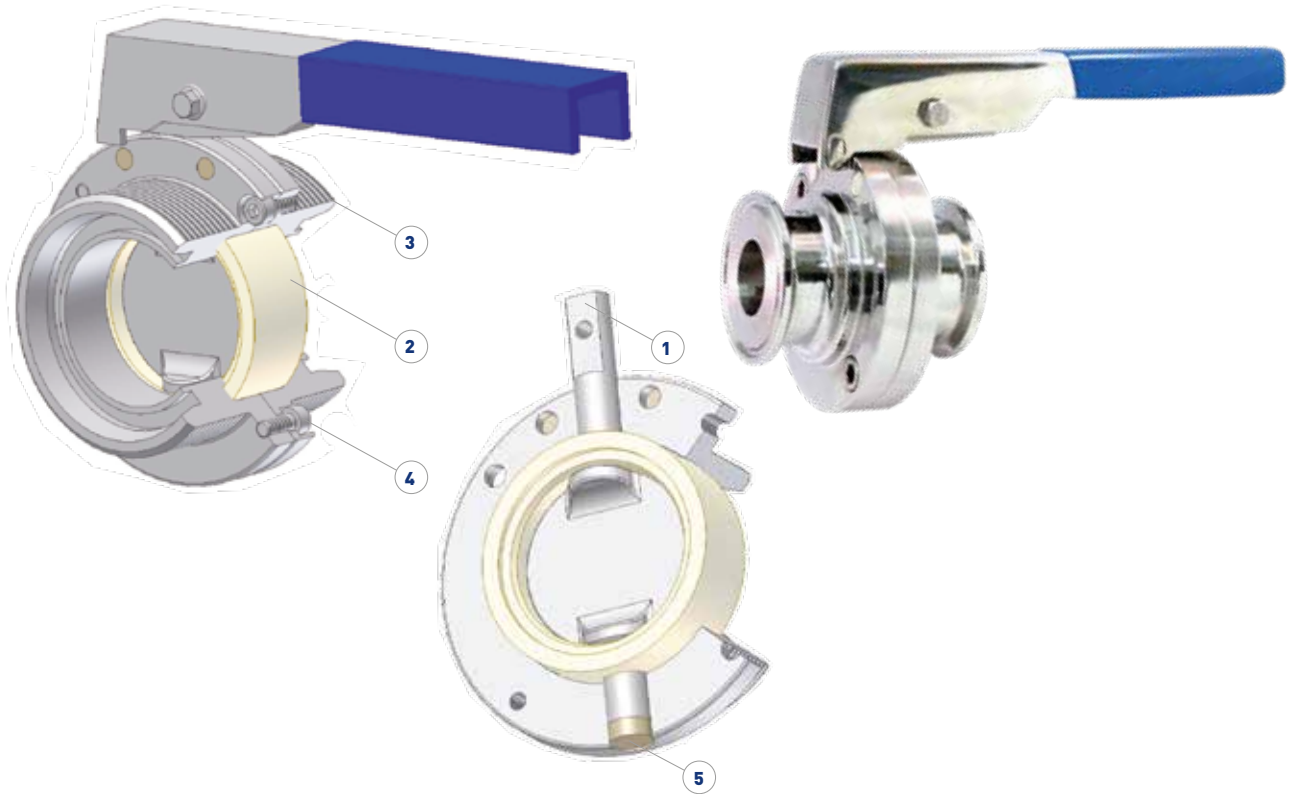
Di fondo con attacco a saldare
*Bottom with weld con-
 nection*

Valvola a farfalla
Butterfly valve



Valvola a farfalla manuale

Manual butterfly valve



Descrizione / Description

- 1** Otturatore a disco monoblocco, con profilo sottile per un maggiore valore di Kv - AISI 316L
One piece disc with higher Kv value - AISI 316L
- 2** Manicotto intercambiabile SILOPREN-EDPM-VITON
Gasket interchangeable SILOPREN-EPDM-VITON (FDA compliance)
- 3** Corpo in due parti fissato con viti a brugola AISI 316 L*
*Two pieces body valve attached with screw bolt AISI 316 L**
- 4** Vite INOX A2
Screw INOX A2
- 5** Tappo silicone
Silicone end cap

*Materiale in alternativa 1.4435

*Material alternatively 1.4435

Manicotto per valvola farfalla / Butterfly valve liner

Elastometro <i>Elastomer</i>	EPDM	SILICONE	VITON
Temperatura eserc. °C <i>Working temperature °C</i>	-30° +120°	-30° +150°	-40° +150°

Momento torcente valvola farfalla / Torque Nm Butterfly valve

DN	25	32	40	50	65	80	100
COPPIA NM <i>Torque Nm</i>	8	12	15	25	32	55	70

Pressione nominale Pn 16

Nominal pressure Pn 16

